

D600 Pro2 HS

Discover the leading large-format high speed 3D printer

D600 Pro series has been proven to be the world's most popular professional large-size 3D printer. It has undergone 6 years of market accumulation and verification. Since its launch, we have continuously upgraded and improved the D600 Pro based on user needs and feedback. So far, we have made approximately 30 improvements in product details, incorporating new technologies, and fixing issues. Make it a very stable professional large-size 3D printer, deeply preferred by small and medium-sized enterprises.

D600 Pro 2 is a brand new product based on D600 Pro that is now being released with more advanced design concepts and deep technical reserves. D600 Pro2 HS is upgraded from the model D600 Pro2, it is a new high-speed printing version based on the in-depth development of Klipper. It adopts a new hotend with a flow rate of up to a record-breaking 90 mm³/s. The stable printing speed can reach 300mm/s, which is 5 times the speed of the D600 Pro2 model.

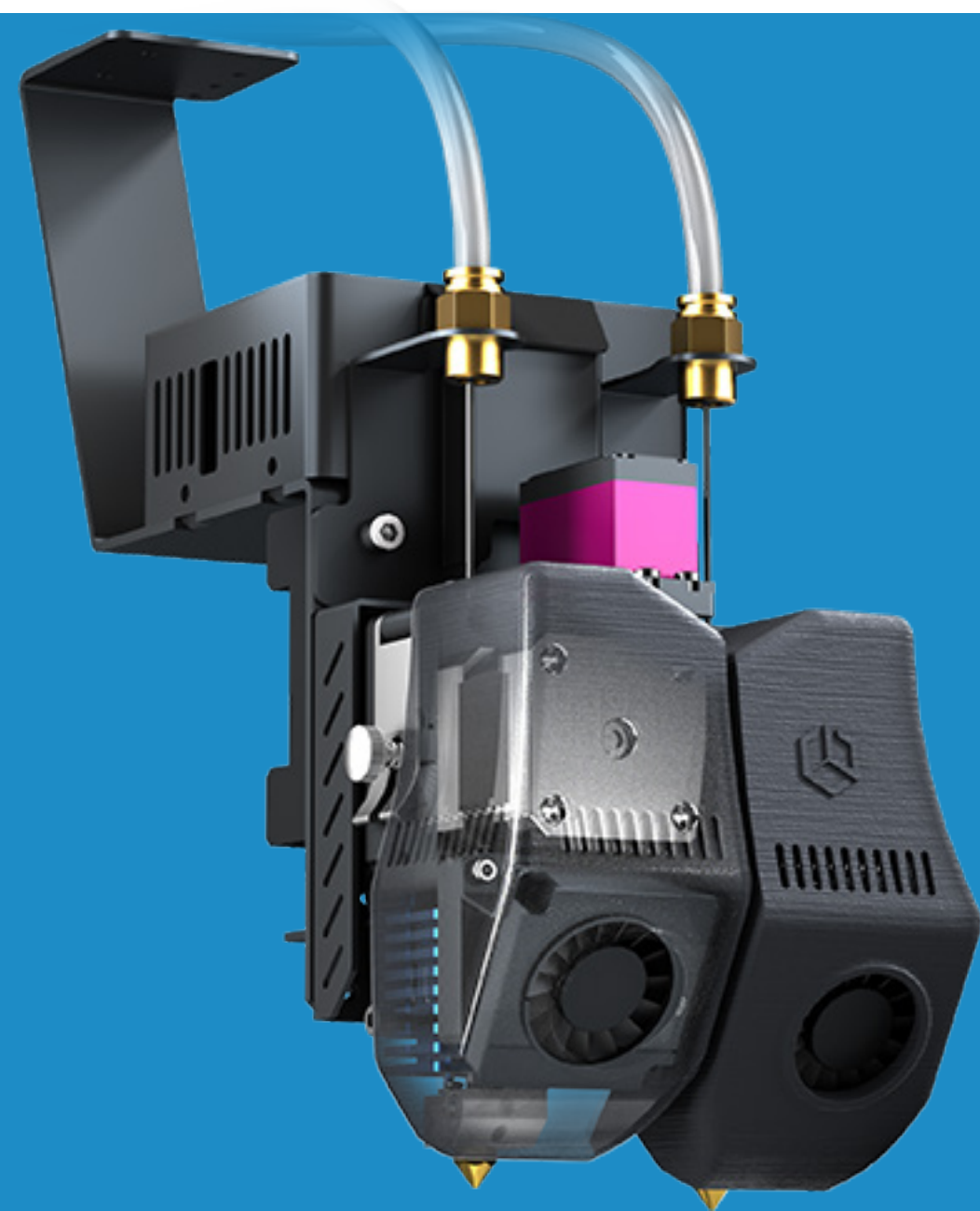
It has been professionally designed, has powerful performance, and features no shortcomings. Large print volume, faster speed, stronger material compatibility, simpler operating procedures, and more stable 7/24 operation. Undoubtedly, it will capture the needs of all professional 3D printer users with a size of 600mm*3 worldwide.

[Get a quote](#)

[Check Specs](#)

- 600*600*600mm
- 420°C+100°C+70°C
- High speed up to 300mm/s
- Removable Magnetic Platform
- Reliable 24/7
- Fully enclosed

[Watch the product video](#)



Auto-rising Dual Extruders 420 °C

D600 Pro2 HS is embedded with new smart auto-rising dual-extruder kit with hotend temperature up to 420 °C, it adopts a new hotend with a flow rate of up to a record-breaking 90 mm³/s. The hotend can be replaced to different size one fastly. it is able to print not only huge prototypes made of ABS, ASA with fastest speed, but also PET-CF, UltraPA-CF and more high performance material with quick remove support materials for direct application. The dual-hotend is easy to maintain and affordable to replace.

Magnetic suction platform

Exclusive R&D of magnetic platform with large size, easy removable platform, high temperature resistance exceeding 100 °C, long-term use without demagnetization.

For oversized models, it is easy to detach them quickly and the bottom of the model is flat. Convenient to all operators.

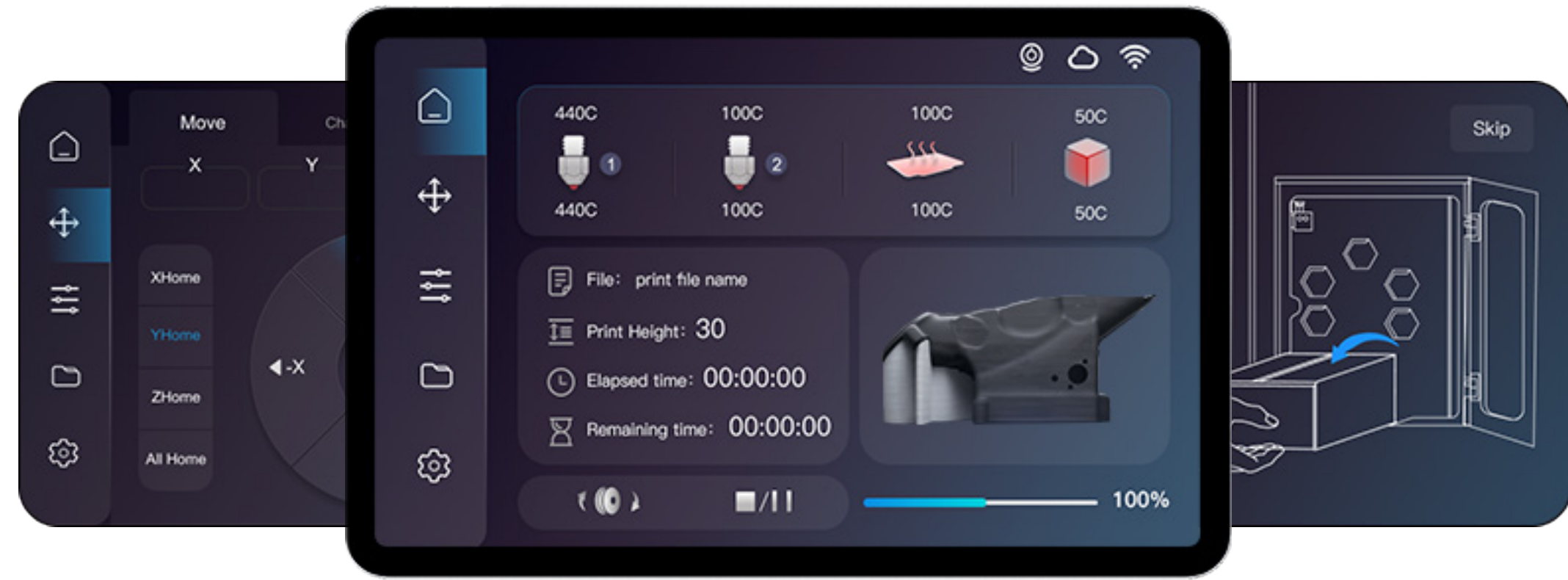


Powerful core

32-bit motherboard, equipped with a powerful NPU core processor, can quickly respond to any program instructions without delay.

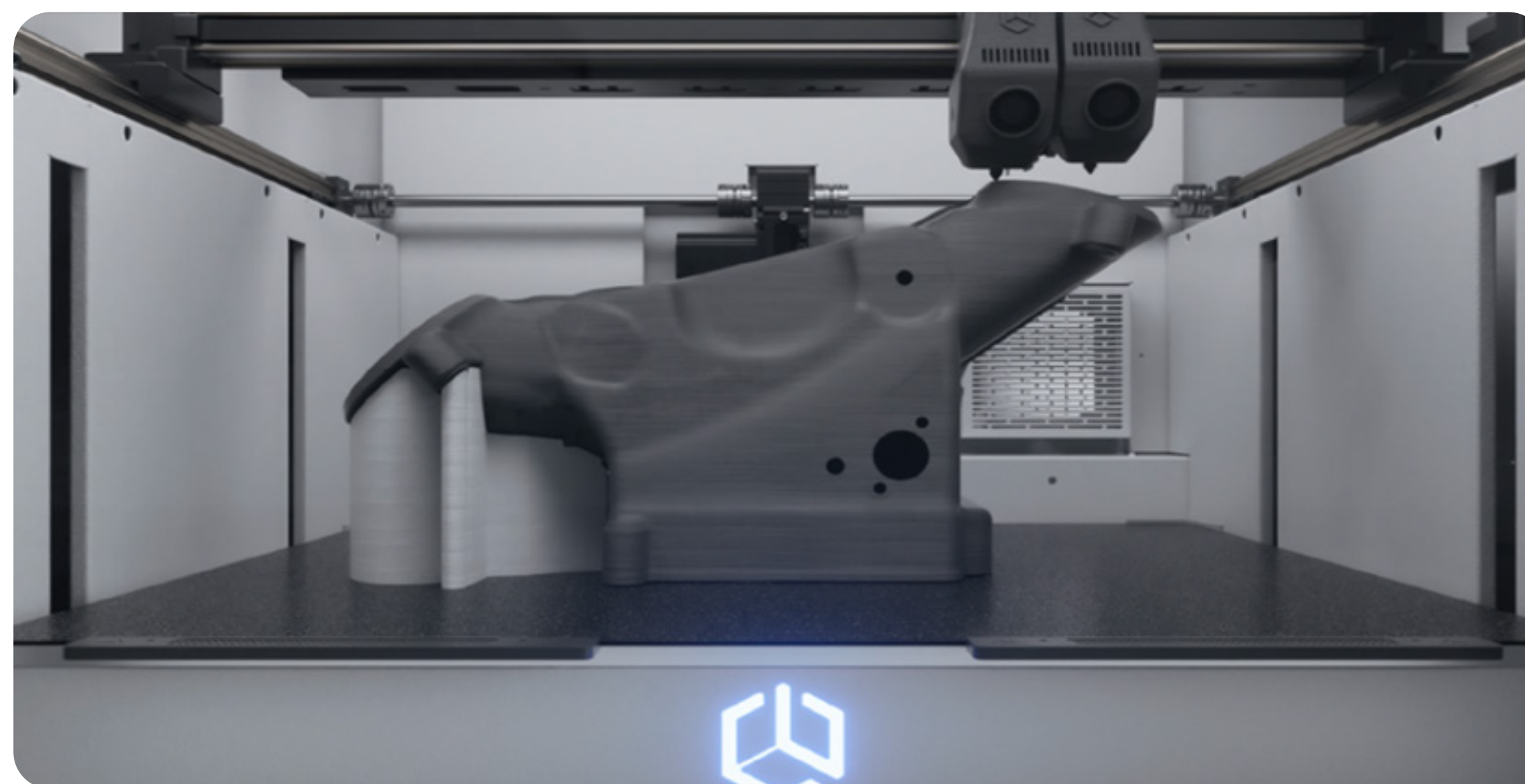
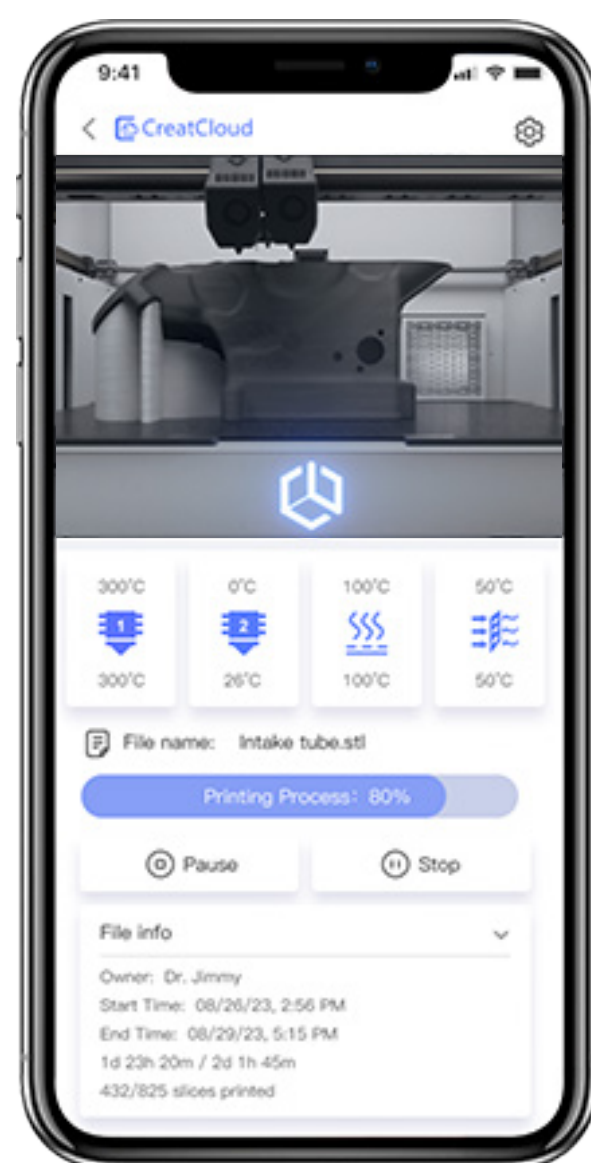
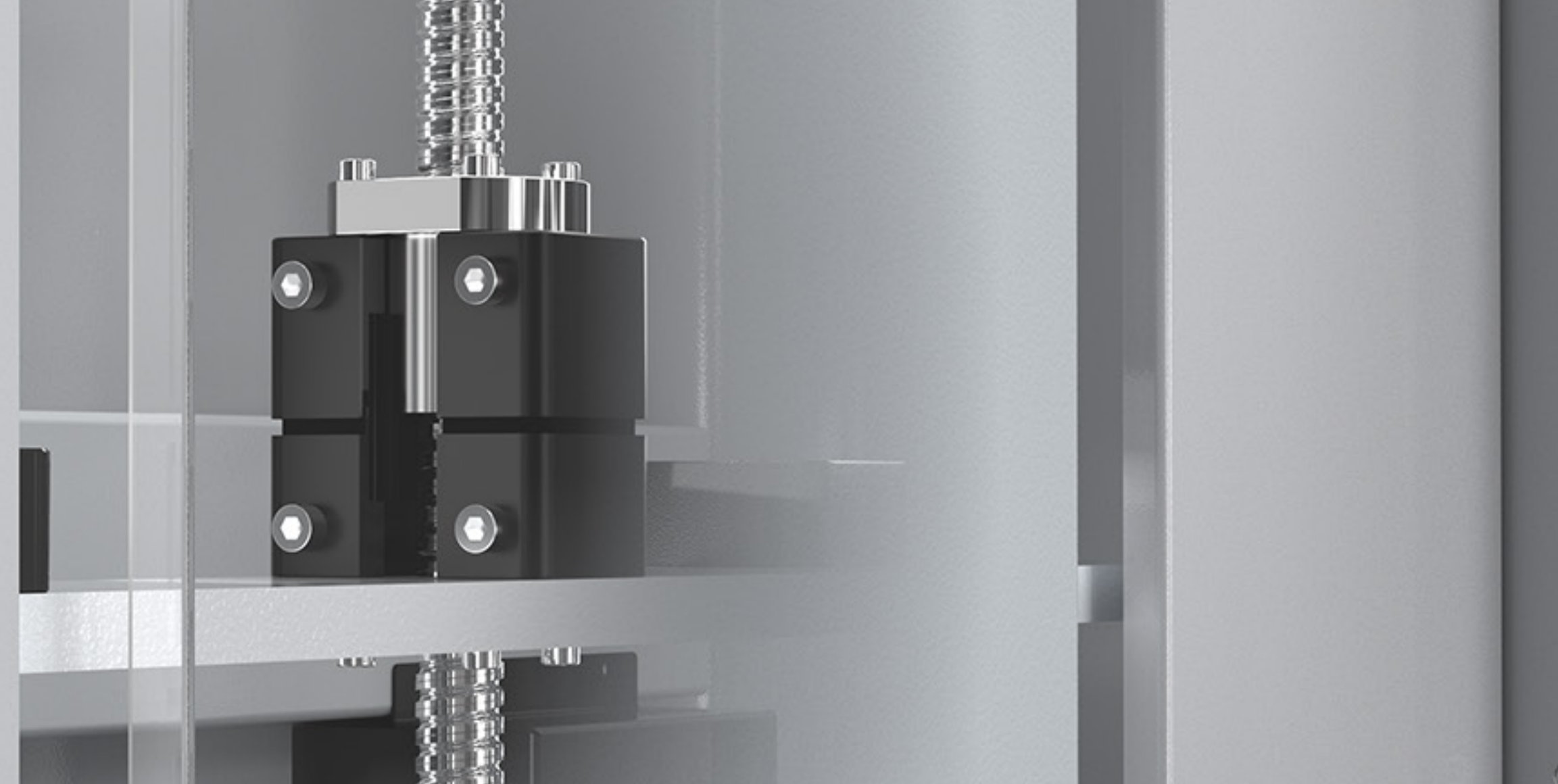
7-inch touch screen

A new UI design language, better user interaction experience, and more convenient operation.



Magic box Technology: Perfect Z direction texture

For tall Z distance 3D printing devices, the texture of the Z-axis will deteriorate with the model height increases. Our Z-axis magic box technology can greatly reduce or even eliminate the Z-surface texture of tall models, ensuring that the surface quality of the model remains smooth and consistent



Camera Control Technology

Camera control technology allow customers to control printing process on speed, pause, temp. etc with an APP remotely, which can get best printing quality with shortest time without failure. A very useful feature on large model and long time printing.

Technical Specs

PRINTING	
Print Technology	FDM
Build Volume	Single Extrusion: 600*600*600mm Dual Extrusion: 540*600*600mm
Number of Nozzles	Double
Auto rising extruders	Yes
Min layer height	0.05mm
Filament Diameter	1.75mm
Filament Compatibility	PLA, ABS, Carbon, Nylon, Ultra-PA, UltraPA-CF, PET-CF, PC, TPU, ASA, PETG, etc.
Nozzle Diameter	0.6mm (0.3, 0.4, 0.6, 0.8, 1.0mm)
Print File Type	GCODE

TEMPERATURE	
Max. Nozzle Temperature	420°C
Max. Bed Temperature	100°C
Max. Chamber Temperature	70°C
Filaments Drying Temperature	0-70°C (Timed)

SPEED	
Printing speed	0-300mm/s

ELECTRICAL	
Power Requirements	240V, 50-60Hz
Max. Power	5500W
Screen	7" Touch Screen
Connectivity	USB/USB disk / WIFI

SOFTWARE	
Software Bundle	CreatWare, OrcaSlicer, Cura, Slice 3r
Supported File Types	STL, OBJ, AMF
Operating Systems	Windows (7,8,10) Mac OS

SPECIAL FUNCTION	
Filament Detection	Pause printing when filament clog or run out
Automatic leveling bed	Yes
Magic box Technology	Perfect Z direction texture
Camera Control	Monitoring + Control
Emergency stop switch	Yes
Air filter	HEPA+Carbon
Firmware	Klipper - high speed

HARDWARE	
X/Y motors	high-precision Servo motors
X/Y Axis	high-precision Linear slides
Air filter	HEPA+Carbon
Print bed	Removable magnetic platform(base on high-precision aviation aluminum plate)
Print surface	PEI sheet+ PEI coating
Mainboard	32 bits
X/Y min&max	Photoelectric switch

SIZE & WEIGHT	
Product Dimensions & Weight	1080*920*1245mm 200kg
Packaging Dimensions & Weight	1150*1000*1410mm 245kg